

# SPECIFICATIONS

## CopyPrinter DX6334



# RICOH

### General

**Printing Process**  
Printer controller built-in, dual cylinder system

**Originals**  
Sheets/Books

**Original Size**  
Platen Glass: Maximum 300mm x 432mm  
ADF: Maximum 297mm x 864mm  
Maximum 148mm x 210mm

**Print Paper Size**  
Maximum: 325mm x 447mm  
Minimum: 70mm x 148mm

**Print Paper Weights**  
47 - 210g/m<sup>2</sup>

**Print Area**  
Maximum: 290mm x 412mm

**Print Speed**  
60 - 135ppm for B4 and below  
60 - 120ppm for A3

**First Print Speed**  
12 seconds (A4)

**Resolution**  
Scanning: 600 x 400dpi  
Printing: 400 x 400dpi

**Paper Capacity**  
1,000 sheets feed and delivery 80g/m<sup>2</sup>

**Image Position**  
Vertical: ± 15mm  
Horizontal: ± 10mm  
Minimum movable unit: 0.25mm

**Image Modes**  
Letter, Letter/Photo, Photo, Tint and Pencil

**Reproduction Ratios**  
Preset enlargement: 115, 122, 141, 200%  
Preset Reduction: 50, 61, 71, 82, 87, 3%  
Zoom 50 - 200% in 1% steps

**Power Consumption**  
Master Making: 355W  
Printing: 270W (at 135ppm)  
Energy saver mode: Below 8W

**Power Source**  
220 - 240V, 50/60Hz

**Dimension (W x D x H)**  
1,420mm x 705mm x 1,020mm  
ADF: 1,420mm x 705mm x 1,130mm

**Weight**  
Platen cover: Below 103.5kg  
ADF: Below 110.5kg

### Printer (Optional)

**Printer Language**  
Standard: RPCS™  
Option: Adobe® PostScript®3™

**Interface**  
Standard: USB2.0,  
Ethernet100BaseTX/10BaseT  
Option: IEEE1284 Parallel Port,  
IEEE802.11b Wireless LAN

**Memory**  
Standard: 128MB (Resident 64MB +  
64MB additional memory)  
Maximum: 320MB with optional memory  
(128MB or 265MB)

**PC Operating Systems**  
Win 95, 98, Me, NT4.0, 2000, XP, Server  
2003  
Mac OS8.6 - 9.2.2, OSX (10.1 - 10.3 - 10.4)  
*Note: Mac OS only works for PS3*

**Network Protocol**  
TCP/IP, EtherTalk, NetBEUI, IPX/SPX, Apple  
Talk

### Added Value Features

Combine and Image Repeat Modes, Skip Feed, Margin Erase, User Codes, Built in Job Separator, Confidential Mode, Auto Magnification, Directional Magnification, Spot colour printing with optional colour drum units, Overlay Mode, Programme Mode, Class/Memory Mode, Makeup Function, A4 master cut with A3 drum, Auto density control, Security Mode, (Drum Lock, Eject Master box Lock), Energy Saver Mode or Auto shut off mode.

### Software

SmartDeviceMonitor™, Web Image Monitor

Company management systems applied during the manufacturing of all Gestetner products conform to ISO9001 quality and ISO14001 environmental management standards.

In compliance with EU RoHS directive (RoHS: Restriction of Hazardous Substances).

We reserve the right to make amendments to the technical specifications and external appearance of this equipment. Please note that the full range of options shown in this publication may not always be available. All brand and product means are recognized and hereby acknowledged, as registered trademarks of their respective owners.



## CopyPrinter DX6334



**RICOH** Home Page: <http://www.ricoh.co.in>

**RICOH INDIA LIMITED**  
52 B, First Floor, Okhla Industrial Estate, Phase III, New Delhi- 110 020  
Tel: 011-41613010-18, Fax: 011-41612221/3019  
email: ril.info@ricoh.co.in

**Gestetner**  
[www.gestetner.com](http://www.gestetner.com)

**Gestetner**  
Total Document  
Solutions

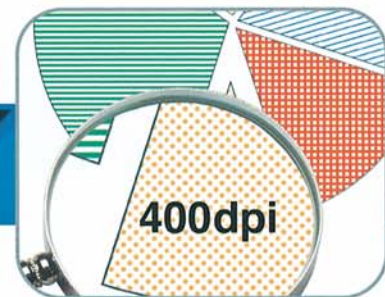
ACCESSIBLE DOCUMENT  
PRODUCTIVITY

## A cost-effective combination of productivity and quality

Achieving high-quality printed output whilst maintaining control over costs is easily achievable with the Gestetner DX6334. This CopyPrinter delivers flexible document solutions, essential for Central Reprographic Departments (CRDs) and organizations such as community centres, educational and religious establishments.

Precise and accurate true 400dpi resolution, plus the option of spot colour means that professional-looking documents are only the touch of a button away. With fast print speeds and flexible paper handling features, all your documents are produced quickly and with impact. Using the optional print controller, output is given even greater definition.

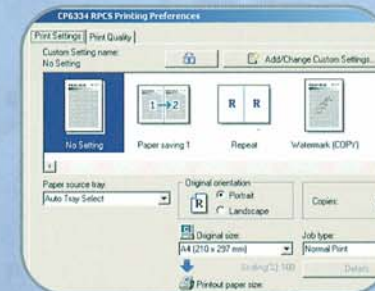
When your organization demands quality printing at low cost, the easy to use CopyPrinter DX6334 offers the best solution for everyone.



135  
PPM

*Ricoh's unique approach links people with knowledge and expertise, combining our wide experience of innovative, document related Products and Software solutions with our world class Business and Professional Services to deliver the best Total Document Solutions for your business.*

Print documents in your preferred format with the easy-to-use RPCS printer driver



Manage a wide range of print demands with flexible paper handling



### Excellent quality

High quality inks and master provide fantastic image quality at true 400dpi. The DX6334 produces a wide variety of documents with excellent solid fill, smooth halftone, crisp photographic images and perfect reproduction of fine text and lines. You can now print a range of documents, such as newsletters, meeting all your organization's demands.

### Productive and cost effective

Delivering increased productivity with cost efficiency, the DX6334's fast 135 prints per minute (ppm) output speed enables large print runs to be completed in no time at all. Gestetner's sophisticated CopyPrinter technology means the more you print on the device, the more you save.

### Further control with user codes

Keep printing cost-effective by allocating print costs by department. By entering a user code at the time of operation, the device can track each department's document history.

### Versatile printing for everyone

The DX6334 gives you the flexibility of producing a wide range of documents plus the added impact of colour. From simple forms, to more complex print jobs such as leaflets, producing professional-looking documents is easy and you can even print multiple images simultaneously for greater efficiency. The flexible paper feed system enables you to print onto a variety of paper types and weights up to A3 in size, and its precision means that image quality is always accurate. CopyPrinters offer a range of standard colour ink, as well as a bespoke service to meet your individual colour needs cost effectively.

### Simple network connectivity

With multiple connectivity options the DX6334 is easily implemented into your environment, offering you ease of use, enhanced output particularly with graphics, control over settings, and greater efficiency. The RPCS print driver, which can be combined with an optional PostScript module and Hard Disk Drive (HDD) unit, allows you to print documents directly from your network, whenever required. When printing from the device, the easy to use touch screen control panel will guide you effortlessly through even complex print jobs.

### Kinder to the environment

The DX6334 features low power consumption and noise levels, offering a quiet operation for a printing device, whilst its natural soya-based ink is kind to the environment. The DX6334 also complies with EU environmental legislation, which means no lead, chromium, PVC or cadmium is used during the manufacturing process.

### Outstanding Software and Services

Complementing the DX6334, Gestetner offers a superb range of Software Solutions and Services, which are designed to add value and ensure that our devices continue to operate seamlessly and reliably. Covering all aspects of your business, including document management, network control, consultancy, training and unrivalled support, these innovative products and services offer a tailor made solution to improve productivity, workflow efficiency and cost control throughout your organization.